



YOUR PARTNER IN ELECTRONICS DESIGN, ENGINEERING AND MANUFACTURING

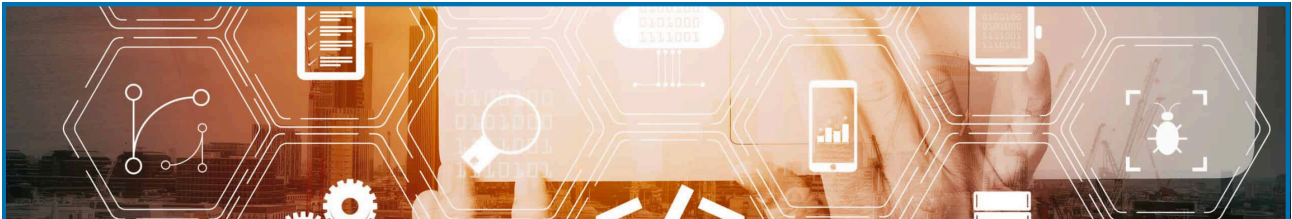
-  **SAFETY & TECHNOLOGY CONSULTING**
-  **IOT PRODUCTS & SOLUTIONS**
-  **PRODUCT DESIGN & DEVELOPMENT**
-  **HARDWARE PROTOTYPING**
-  **INDUSTRIAL AUTOMATION**
-  **SMART SOLUTIONS**



ABOUT US

We are a forward-thinking technology company dedicated to delivering innovative solutions that empower businesses to excel in today's dynamic market. Our expertise lies in leveraging cutting-edge technologies to address complex challenges and drive meaningful outcomes for our clients.

SOLUTIONS



1. Technology Consulting in Electronic Safety Products & Smart Solutions

We provide expert consulting services for electronic safety products and smart solutions, focusing on:

- **Customized Solutions:** Tailored strategies to meet specific safety requirements.
- **Innovative Design:** Leveraging advanced technology for reliable and efficient safety solutions.
- **System Integration:** Ensuring seamless integration of smart safety systems for optimal performance.



2. IoT Products & AI-Based Solutions

Harnessing the power of IoT and artificial intelligence, we develop innovative systems that drive efficiency and connectivity. Our offerings include:

- **Smart Devices:** Seamless integration of connected devices for enhanced functionality.
- **AI-Powered Analytics:** Leveraging data insights to optimize decision-making and operations.
- **Automation:** Implementing intelligent automation to streamline processes.



3. Product Engineering – Embedded Systems

We offer end-to-end product engineering services with a focus on embedded systems. Our expertise includes:

- **Hardware Design:** Developing robust and innovative electronic circuits and components.
- **Firmware Development:** Crafting efficient and reliable embedded software.
- **Custom PCB Design:** Creating tailored designs to meet specific requirements.
- **Prototyping and Testing:** Ensuring functionality and reliability through rigorous testing.

AI CAMERA & PROXIMITY WARNING ALERT SYSTEM WITH DATALOGGER

KEY FEATURES

High-Resolution Imaging

- Precise Identification

Object and Hazard Detection

- Automated Danger Identification

Proximity Warning

- Real-Time Alerts

360° Detection

- Full Situational Awareness

Audible and Visual Alerts

- Attention-Grabbing Warnings

Datalogger

- Operational Insights

Cloud Connectivity

- Remote Monitoring & Management



PRODUCT LIST



AI Camera & Monitor



PWAS



Tag Combo PWAS



IoT PWAS



PWAS - DMS



Multisensor PWAS

GPS TRACKER TK017-4G-CAT1

KEY FEATURES

4G CAT1 Connectivity

- High-Speed & Stable Communication

Real-Time GPS Tracking

- Accurate Location Updates

Wide Application Compatibility

- Versatile design for Various Vehicles

Multi-Sensor Integration

- Comprehensive Sensor Support

Alerts and Notifications

- Instant Alerts

Power Management

- Efficient Power Use

Centralized Fleet Management

- Real-Time Monitoring

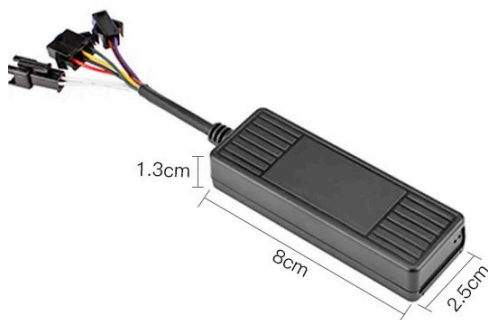
Data Analytics and Insights

- Actionable Analytics



OVERVIEW

- 4G CAT1 Connectivity: High-speed, reliable communication for real-time tracking.
- Versatile Application: Suitable for logistics trucks, buses, and rental fleets.
- Precise GPS Tracking: Accurate location data for better fleet management.
- Data Analytics: Actionable insights on vehicle performance and behavior.
- Web-Based Software: Centralized tools for simplified monitoring.
- Advanced Security: Theft prevention and remote immobilization features.



ACC detection



Electronic fence



GSM + GPRS system



Location tracking



Remote locking



Curve compensation



Track playback



Mileage statistics

DRIVER MONITORING SYSTEM (DMS)

KEY FEATURES

Fatigue Detection

- Monitors Drowsiness

Real-Time Alerts

- Immediate Warnings

Driver Behavior Recording

- Smoking Detection
- Cell Phone Use Detection
- Distraction Detection
- Absence Detection

Wide Vehicle Compatibility

- Universal Fitment

High-Resolution Video

- 1080P Video Recording

Simple Installation

- Easy Setup

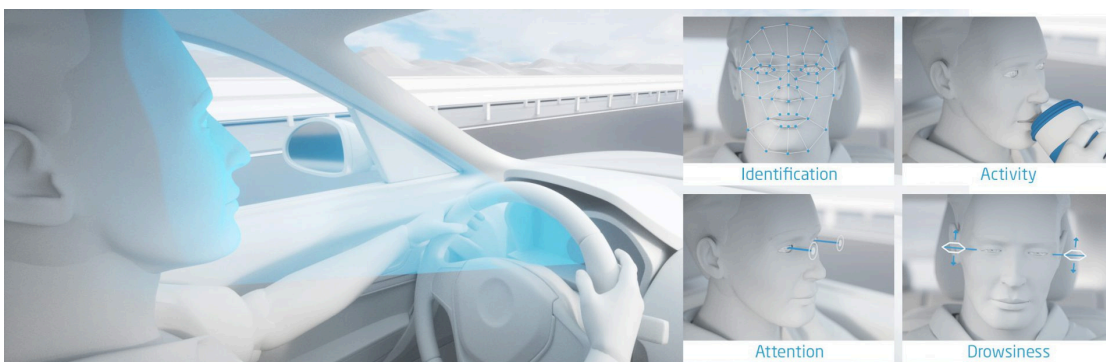
Continuous Monitoring

- 24/7 Operation



OVERVIEW

- Real-Time energy monitoring and data analytics.
- Comprehensive control and customization.
- Carbon footprint reduction through energy optimization.
- Cost and energy efficiency.
- Advance data analytics for decision making.
- Increases industrial efficiency.



FORKLIFT SAFETY & ADVANCED TECHNOLOGY SOLUTIONS

KEY FEATURES

Comprehensive Safety

- Advanced technologies for safer workplaces.

Efficiency Boost

- Streamlines workflows to save time.

Risk Reduction

- Reduces hazards with innovative tools.

Compliance Ready

- Meets all safety standards.

Process Optimization

- Enhances workflows for better operations.

Versatile Integration

- Easily adaptable to diverse industrial systems.



PRODUCT LIST



Forklift Speed Limiter



Area Speed Limit



Industrial Vehicle Safety Management System



Seat Belt Alarm



UWB Ranging Collision Avoidance Warning System



AI Collision Avoidance Warning System



Warehouse Logistics Indoor Positioning System



Corner Collision Avoidance System

SMART HELMET

KEY FEATURES

Wearer's Location (GPS)

- Real-Time GPS Tracking

Health Monitoring (Temperature)

- Temperature Monitoring

Proximity Safety

- Proximity Alerts

Sensor Data Collection

- Comprehensive Data Collection

Humidity Check

- Humidity Monitoring

Air Quality Check

- Air Quality Monitoring

SOS Panic Button

- Emergency SOS Button












OVERVIEW

- "Smart Helmet" includes a plastic helmet and a built-in GPS tracker.
- The GPS tracker is compact and housed in a polymer case with control buttons.
- Ensures constant monitoring of protective equipment usage by personnel.
- Reduces injury risks through enforced compliance with safety regulations.
- Enhances workplace safety by integrating modern technology with protective equipment.

Smart Safety Helmet for Workers



 Emergency call	 Personnel positioning	 1080p/720p Video backhaul
 Image acquisition	 Voice&Text Broadcasting	 Fall alarm
 Electronic fence	 Playback of the worker's trajectory	 Voice&Text Broadcasting

VEHICLE SPEED DETECTION WITH MONITORING SYSTEM

KEY FEATURES

High-Accuracy Speed Detection

- Radar/LIDAR Sensors

Real-Time Speed Monitoring

- LED Speed Display

Instant Speed Analysis

- Embedded Processing Unit

Data Storage and Reporting

- Secure Data Storage

Remote Monitoring Capability

- Wi-Fi/Ethernet Connectivity

Seamless System Integration

- Easy Integration with Traffic Systems

Rugged Outdoor Design

- Weatherproof Enclosures

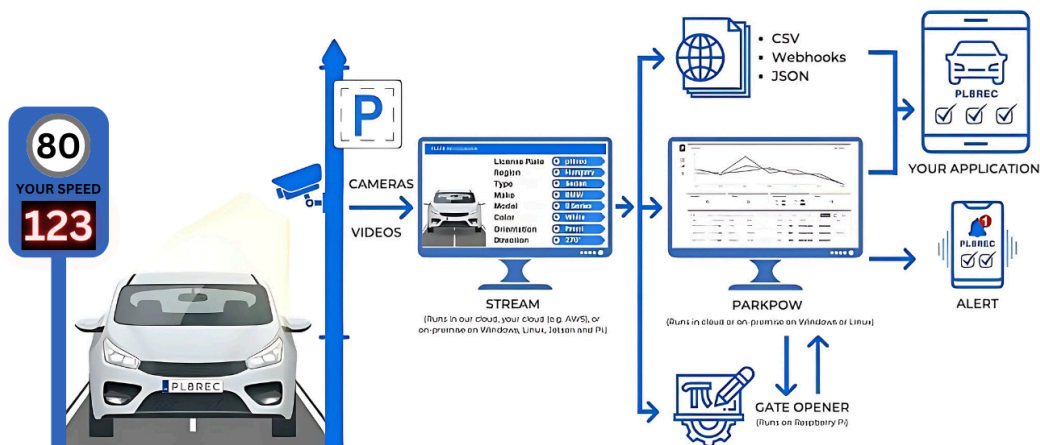
Flexible Power Options

- Battery/AC/DC Power Supply



OVERVIEW

- Advanced Traffic Management: Enhances safety and monitors speed violations.
- Real-Time Data Analysis: Provides instant insights into traffic speed.
- Speed Regulation Compliance: Ensures adherence to speed limits.
- Safer Driving Behavior: Promotes responsible driving habits.
- Versatile Application: Suitable for private premises and public infrastructure.



SMART PARKING OCCUPANCY DETECTION SYSTEM

KEY FEATURES

Dual-Sensor Detection

- Radar Measurements
- Geomagnetic Sensors

IoT Connectivity

- 4G Network Compatibility
- LoRaWAN Support

Cloud-Based Software Application

- Real-Time Dashboard
- Data Analytics
- Custom Alerts
- API Integration

Durable and Weatherproof Design

- Rugged Build
- IP-Rated Enclosure

Energy Efficiency

- Long battery life

Scalable Deployment

- Flexible installation



OVERVIEW

- IoT-Enabled: Advanced technology for efficient waste management.
- Real-Time Garbage Monitoring: Tracks bin fill levels instantly.
- Integrated Connectivity: Supports LoRaWAN, 4G, and cloud communication.
- GPS Tracking: Ensures precise bin location monitoring.
- Optimized Collection: Minimizes costs and environmental impact.
- Scalable Solution: Ideal for municipalities, companies, and facilities.



SMART BIN GARBAGE LEVEL SENSING SYSTEM

KEY FEATURES

Garbage Level Monitoring

- Radar/Ultrasonic Sensors
- Custom Alerts

Connectivity Options

- LoRaWAN Support
- 4G Network Compatibility

GPS Integration

- Real-Time Location Tracking
- Geo-Fencing

Cloud-Based Software

- Centralized Dashboard
- Analytics and Reporting
- Multi-User Access

Durable and Weatherproof Design

- Rugged Build
- IP-Rated Enclosure

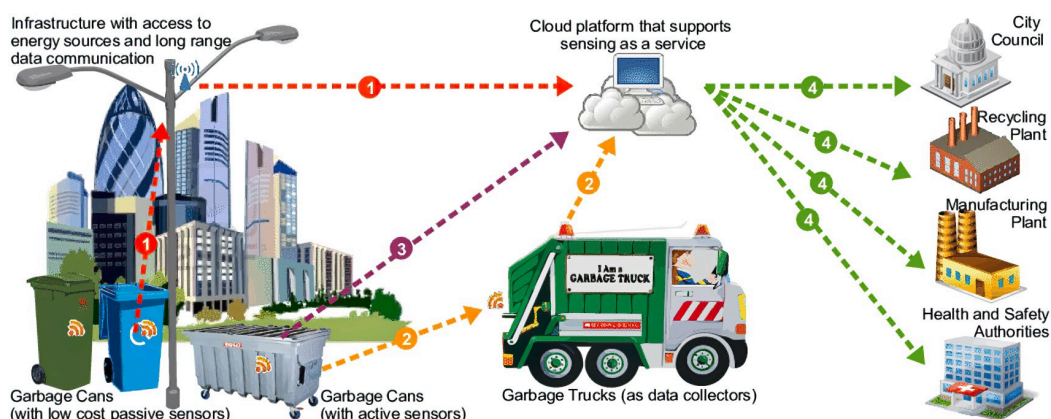


Wireless Communication Module Options



OVERVIEW

- IoT-enabled waste management system for efficient tracking.
- Technologies used: LoRaWAN, 4G, GPS, cloud software.
- Target audience: Municipalities and waste management companies.
- Real-time garbage level monitoring for optimized collection.
- Resource optimization and reduced carbon footprint.
- Enhanced operational efficiency for large facilities.



ENERGY MANAGEMENT SYSTEM (EMS) WITH 4G DATALOGGER

KEY FEATURES

4G Datalogger

- Seamless 4G Connectivity
- Secure Data Storage & Transmission

Web-Based EMS Platform

- Accessible Anywhere
- Customizable Dashboards

Energy Optimization Tools

- Automated Alerts
- Demand-Response & Load Management

Scalability & Integration

- Scalable Applications
- IoT & Smart Meter Compatibility

Real-Time Alerts & Notifications

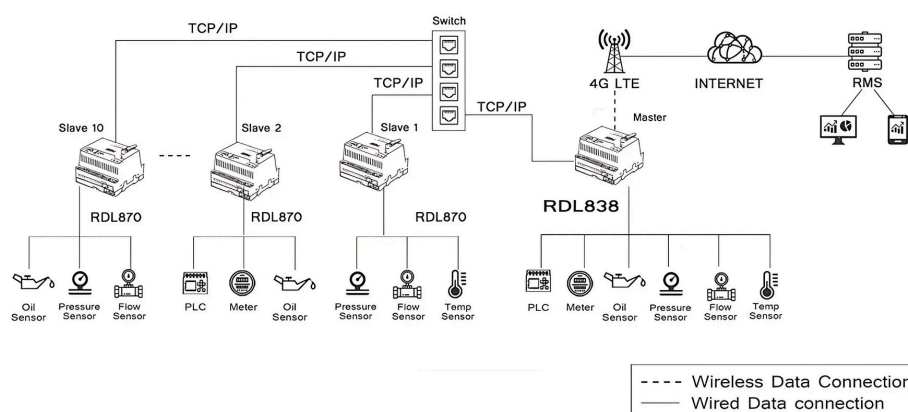
- Instant Notifications



OVERVIEW

- Real-Time energy monitoring and data analytics.
- Comprehensive control and customization.
- Carbon footprint reduction through energy optimization.
- Cost and energy efficiency.
- Advance data analytics for decision making.
- Increases industrial efficiency.

APPLICATION DIAGRAM



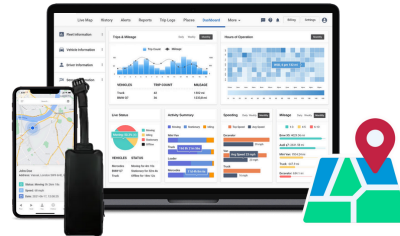
OUR PRODUCTS

In-Cab Control Unit Warns
Driver Of Approaching Vehicles

V2V Unit Detects
Approaching Vehicles



AI Camera & Monitor



GPS Tracker
TK017-4G-CAT 1



Driver Monitoring System (DMS)



Forklift Safety & Advanced
Technology Solutions



Smart Helmet



Speed Management System



Smart Parking Occupancy Detection
System



Smart Bin Garbage Level Sensing
System



Energy Management System (EMS)

أرامكو
aramco



نيوم
NEOM

رؤية
VISION
2030
المملكة العربية السعودية
KINGDOM OF SAUDI ARABIA

سككوم
SACOM
TECHNOLOGIES
Establishment Sadda Shammoukh Commercial

📍 Sacom Technologies, Building No 7219, Granada 422,
Al-Jubail, KSA - 35417
✉ info@sacomtechnologies.com
🌐 www.sacomtechnologies.com
☎ 0595158060